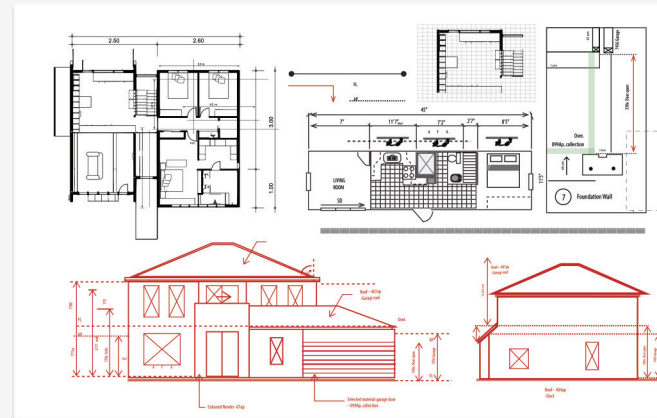


# ALL-IN-ONE DESKTOP LARGE FORMAT PRINTER

Compact & Versatile for Copy, Print & Scan



**Tiltable Display**  
for easier viewing



TC-21M

TC-21



Max. Print Width



Roll Paper &  
Cut Sheet Support



Minimal Margin  
Printing



Compact  
Width



Refillable Ink Bottles  
280 ml (4 x 70 ml)



High durability\*  
against water



Free Poster  
Creation Software

The imagePROGRAF TC Series provides exceptional versatility in creating high-quality CAD drawings, posters and large prints. Compact and easy to operate, experience greater productivity that boosts your workflow even in small workplaces with the ability to print from A6 to A1 sizes. Improve business efficiency through enhanced scanning and copying of original documents using the A4 flat-bed scanner.

# COMPACT EFFICIENCY WITH EXCELLENT PRINT QUALITY

The TC series boasts a small footprint with a width of 24 inches. The 4-colour pigment ink produces vivid red colours create stunning printouts that impress, and its ease of operation boosts efficiency and productivity.

## COMPACT WIDTH

The 24-inch width helps the TC series to easily fit into shelves, or be placed on desks within small offices while allowing for an optional printer stand and desktop basket.



## MINIMAL MARGIN PRINTING

The TC series delivers high quality output on roll paper with minimal margins of approximately 0.5mm on the left and right sides, keeping it borderless on the top and bottom.

## VERSATILE MEDIA HANDLING

Supports a wide range of paper sizes from A6 to A1-sized/24-inch width and various paper types like from postcards, envelopes, labels and office documents to CAD line drawings, posters and long banners.



## BUNDLED APPLICATIONS



Canon's PosterArtist (Web Version) software provides an easy way to create and print visually impressive poster designs.

Try for free at <https://posterartist.canon>

## INDUSTRIES & APPLICATIONS

## HIGH IMAGE QUALITY

The TC series improves in colour mapping for more accurate reproduction, producing a more dense and vivid colour expression in posters and flyers.

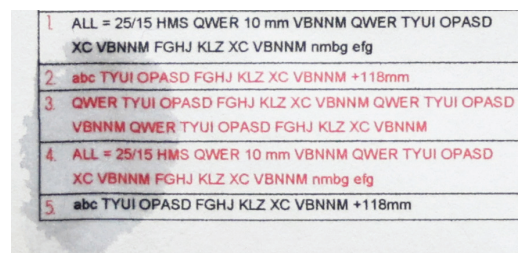
### Vivid Colours



Printed with conventional colour

Printed with Vivid colours

### Effects of water spills\* on prints



Lines & text remain visible after water spills

Printed with TC-21

\*Water droplets on the drawing 24 hours after it was printed on plain paper "Red Label 75gsm"

## AUTOMATIC SWITCHING ROLL PAPER / CUT SHEET

The TC series supports output prints of up to **A1-sized/24-inch width roll paper** alongside the easy loading of cut sheet media, while the Auto Sheet Feeder can cater up to **100 A4\* or 50 A3\*** sheets.



Roll Paper



Cut Sheet

\*Plain paper



CAD DRAWINGS & GIS MAPS



POSTERS



EDUCATION





## BUNDLED INK BOTTLES

The TC series comes with large bundled ink bottles with a **total capacity of 280 ml** (4 colours x 70 ml), instantly catering for any print needs.

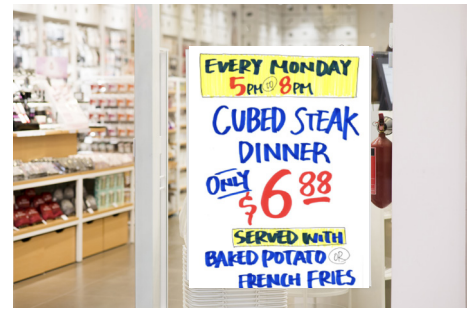
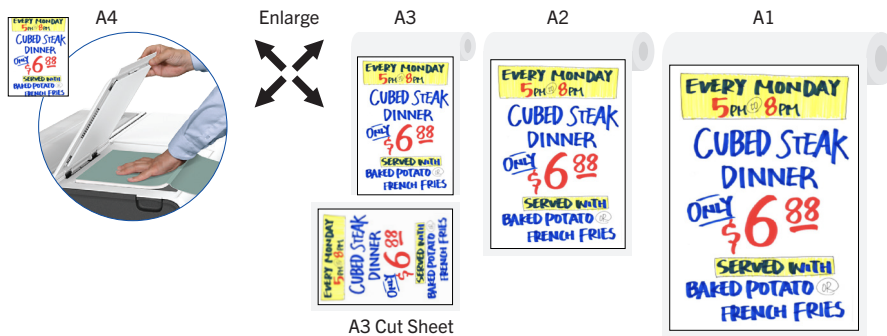


## MULTIPLE COPY FUNCTIONS

Enlargement copy, repeated copy, layout copy, image stitch copy and split & enlarge copy functions are available on the TC-21M.

### Enlargement Copy

A4 documents can be scanned and enlarged up to A1 or 24" size on roll paper, or up to A3 on cut sheets to maximize the image automatically. The orientation of the image can be selected on the user panel.



### Repeated Copy

Repeatedly copy an A4 document to fit the width of roll paper. Fitted to maximum roll width of A1/24", or A4 on cut sheets.



A4



A1 roll

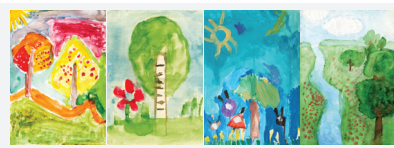


### Layout Copy

Multiple original images can be copied in order into one continuous layout and fitted to the roll paper width. Fitted to maximum roll width of A1/24" inch.



A3 roll

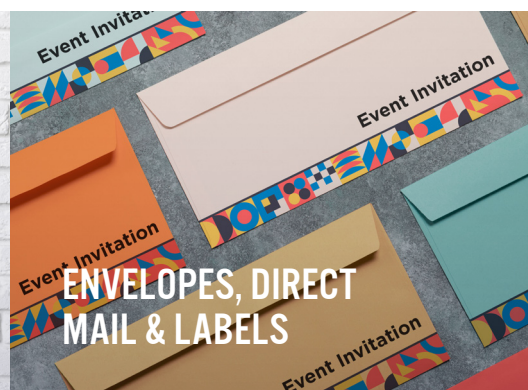


1 x 4 (4 images)

Maximum of 4 A4 original images can be copied



PHOTOS & BANNERS



ENVELOPES, DIRECT MAIL & LABELS



A4/A3 DOCUMENTS

SPECIFICATIONS

| PRINTER                               |                       | TC-21  | TC-21M  |
|---------------------------------------|-----------------------|--|---|
| Printer Type                          |                       | 4-Colour, 24"  |   |
| Number of Nozzles                     |                       | 4,352 nozzles (BK: 1,280 nozzles, Other Colours: 1,024 nozzles each)   |   |
| Max. Print Resolution                 |                       | 2,400 x 1,200 dpi  |   |
| Nozzle Pitch                          |                       | 1,200 dpi x 2  |   |
| Line Accuracy <sup>1</sup>            |                       | ± 0.1% or less   |   |
| Ink Bottle Size                       | Sales Ink             | 70 ml x 4 (BK / C / M / Y)   |   |
|                                       | Bundle Starter Ink    | 70 ml x 4 (BK / C / M / Y)   |   |
| Ink Type                              |                       | Pigment Ink  |   |
| Windows Platform                      | For Printer           | Windows Printer Driver   |   |
|                                       | For Scanner           | -  | Windows Scanner Driver, WIA Driver, Windows Scanner Utility, IJ Network Scanner Selector EX |
| MAC Platform                          | For Printer           | Canon IJ Printer Driver  |   |
|                                       | For Scanner           | -  | IJ Scan Utility Lite  |
| Print Languages                       |                       | SG Raster  | SG Raster, PDF, JPEG  |
| Print Solutions                       |                       | ChromeOS, Canon PRINT Inkjet/SELPHY (iOS/Android), Canon Print Service, Free Layout Plus, PosterArtist Web, Direct Print Plus (PDF/JPEG), PIXUS/PIXMA Cloud Link             |   |
| Management Solutions                  |                       | Media Configuration Tool, Quick Utility Toolbox, Wi-Fi Connection Assistant, Printer Update Utility  |   |
| Interface (Built-in)                  | USB A Port            | -  | USB Memory (Direct Print), JPEG/PDF <sup>2</sup> (Exif ver2.2/2.21/2.3)                     |
|                                       | USB B Port            | Hi-Speed USB, Full Speed (12 Mbit/sec), Hi-Speed (480 Mbit/sec), Bulk Transfer, Series B (4 pins)  |   |
|                                       | Network               | IEEE 802.3 10base-T, IEEE 802.3u 100base-TX, SNMP HTTP, TCP/IP (IPv4/IPv6)   |   |
|                                       | Wireless LAN          | IEEE802.11 a/b/g/n/ac<br>WPA-PSK (TKIP/AES)<br>WPA2-PSK (TKIP/AES)<br>WPA3-SAE(AES)<br>WPA-EAP(AES) <sup>3</sup><br>WPA2-EAP(AES) <sup>3</sup><br>WPA3-EAP(AES) <sup>3</sup> |   |
| Memory                                |                       | 1 GB   |   |
| Display                               |                       | LCD (2.7 inch / 6.7 cm) (Touch Screen, Color,Tilt)   |   |
| OS Compatibility                      |                       | Windows, Macintosh<br><i>*Please visit <a href="https://asia.canon">https://asia.canon</a> to confirm OS compatibility and to download the latest drivers.</i>               |   |
| SCANNER                               |                       |  |   |
| Scanner Type                          |                       | -  | Flatbed (CIS Scanner)   |
| Optical Resolution (DPI) <sup>4</sup> |                       |  | 1200 x 2400 dpi   |
|                                       | Grayscale             |  | 16bit/8bit  |
|                                       | Colour                |  | RGB 16bit/8bit  |
| Scanning Speed                        | Grayscale/ Monochrome |  | 1.5 ms/line at 300 dpi  |
|                                       | Colour                |  | 3.5 ms/line at 300 dpi  |
| Maximum Document Size                 |                       |  | A4/LTR (216 x 297 mm)   |
| PRINT SPEED <sup>5</sup>              |                       | A1 SIZE  |   |
| Plain Paper                           | CAD Drawing           | 30 sec (Draft) (Monochrome)  |   |



Printer Stand + Basket

Desktop Basket

Specifications are subject to change without notice.

<sup>1</sup> User adjustments required. Printing environment and media must match those used for the adjustments.  
Paper required: Plain paper and coated paper only.  
<sup>2</sup> PDF supports only files generated by TC Series and Canon IJ products.  
<sup>3</sup> IEEE802.1X (EAP-TLS/EAP-TTLS/PEAP) supported.  
<sup>4</sup> Optical resolution is based on the ISO 14473 standard and represents the maximum sampling rate for scanning documents.  
<sup>5</sup> A1 page portrait orientation, plain paper with fastest print mode setting. Print speed (time taken to print one page) does not include time required for data processing, data transfer and pre-printing operations.  
<sup>6</sup> Supported roll paper widths are 24 inch, 18 inch, 17 inch, A1, A2, A3, B2, B3. The left and right margins are approximately 0.5 mm. There may be a margin of approximately 0.1 – 0.8 mm depending on printing conditions and the printing environment. Backlight film, tracing paper and translucent matte film are not supported.

Canon Marketing (Malaysia) Sdn Bhd

**Canon**  
No 6-2-01, Canon Tower,  
UOA Business Park ( Tower 6), Jalan Pengaturcara U1/51A, Seksyen U1,  
40150 Shah Alam, Selangor, Malaysia.  
Delighting You Always  
Tel: 1800-18-2000 Fax: 603-5567 9346  
Website: <https://my.canon>

| MEDIA HANDLING                               |  | TC-21  | TC-21M                               |
|--|--|--|--------------------------------------|
| Media Width                                  | Roll Paper   | 297 - 610 mm (A3 width to 24")   |                                      |
|  | Cut Sheet  | 89 - 297 mm (A3, A4, Letter, A5, A6)   |                                      |
| Media Thickness                              | Roll Paper/<br>Cut Sheet   | 0.08 - 0.28 mm   |                                      |
|  | Roll Paper   | 297 - 610 mm   |                                      |
| Printable Media Width                        | Cut Sheet  | 89 - 297 mm  |                                      |
| Printable Media Length                       | Roll Paper   | 203.2 mm - 4 m   |                                      |
|  | Cut Sheet  | 127 - 1200 mm  |                                      |
| Media Core Size                              |  | 2 inch core  |                                      |
| Outside Diameter Roll Paper                  |  | 110 mm or less   |                                      |
| Media Feed                                   | Roll Paper   | 1 Roll   |                                      |
|  | Cut Sheet  | Automatic Switch Function (ASF)  |                                      |
| Delivery Direction                           |  | Face-up, Front side  |                                      |
| Margins<br>(Top, Bottom,<br>Side)            | Recommended Area<br>(Roll Paper)                                     | Top, Bottom, Left, Right: 5mm<br><i>*Some photo modes - Top: 30 mm, Bottom: 30 mm</i>  |                                      |
|  | Recommended Area<br>(Cut Sheet)                                      | Top, Bottom, Left, Right: 5mm  |                                      |
|  | Printable Area<br>(Roll Paper)                                       | Top, Bottom, Left, Right: 5mm<br><i>*Some photo modes - Top: 30 mm, Bottom: 30 mm</i>  |                                      |
|  | Printable Area<br>(Roll Paper Minimal<br>Margin Print <sup>6</sup> ) | Top, Bottom: 0 mm, Left, Right: approx. 0.5 mm   |                                      |
|  | Printable Area<br>(Cut Sheet)  | Top, Bottom, Left, Right: 5mm  |                                      |
| DIMENSIONS (W x D x H) & WEIGHT <sup>7</sup> |  |  |                                      |
| Packaged<br>Dimensions                       | Printer  | 1120 x 726 x 406 mm<br>Weight: 45 kg   | 1120 x 726 x 406 mm<br>Weight: 46 kg |
|  | Stand + Basket<br>(SD-24)<br>(W x D x H)                             | 1058 x 826 x 270 mm<br>Weight: 20kg  |                                      |
|  | Desktop Basket<br>(BU-06)<br>(W x D x H)                             | 798 x 301 x 111 mm<br>Weight: 2.0 kg   |                                      |
| Printer<br>Dimension                         | Printer  | 968 x 613 x 395 mm<br>(ASF <sup>8</sup> Opened, OP <sup>9</sup> Opened)<br>968 x 553 x 395 mm<br>(ASF <sup>8</sup> Opened, OP <sup>9</sup> Closed)<br>968 x 593 x 245 mm<br>(ASF <sup>8</sup> Closed, OP <sup>9</sup> Opened)<br>968 x 533 x 245 mm<br>(ASF <sup>8</sup> Closed, OP <sup>9</sup> Closed) |                                      |
|  |  | Weight <sup>10</sup> : 32 kg   | Weight <sup>10</sup> : 34 kg         |
|  | With Stand + Basket<br>(SD-24)<br>(W x D x H)                        | 968 x 868 x 1024 mm<br>(ASF <sup>8</sup> , OP <sup>9</sup> , Basket Opened)<br>968 x 720 x 874 mm<br>(ASF <sup>8</sup> , OP <sup>9</sup> , Basket Closed)  |                                      |
|  |  | Weight <sup>10</sup> : 43 kg   | Weight <sup>10</sup> : 44 kg         |
|  | With Desktop Basket<br>(BU-06)<br>(W x D x H)                        | 968 x 845 x 1115 <sup>11</sup> mm<br>(ASF <sup>8</sup> , OP <sup>9</sup> , Basket Opened)<br>968 x 595 x 965 <sup>11</sup> mm<br>(ASF <sup>8</sup> , OP <sup>9</sup> , Basket Closed)  |                                      |
|  |  | Weight <sup>10</sup> : 33 kg   | Weight <sup>10</sup> : 35 kg         |
| POWER & OPERATING REQUIREMENTS               |  |  |                                      |
| Power Supply (Printer)                       |  | AC 100 - 240 V (50 - 60 Hz)  |                                      |
| Power<br>Consumption<br>(Printer)            | Operation  | Operation: Approx. 28 W,<br>Sleep Mode: Approx. 1.7 W  |                                      |
|  | Sleep Mode   | Approx. 2.3 W  |                                      |
|  | Power OFF  | Approx. 0.07 W   |                                      |
| Recommended<br>Environment                   | Temperature  | 15 - 30 °C   |                                      |
|  | Humidity   | 10 - 80% RH (no dew condensation)  |                                      |
| Acoustics                                    | Power <sup>12</sup>  | Approx. 6.0 Bels   |                                      |
|  | Pressure <sup>12</sup>   | Approx. 41.5 dB(A),<br>Standby 35 dB(A) or less  |                                      |
| OPTIONAL ACCESSORIES                         |  |  |                                      |
| Roll Unit                                    |  | -  |                                      |
| 2/3" Roll Holder                             |  | -  |                                      |
| Printer Stand + Basket                       |  | SD-24  |                                      |
| Desktop Basket                               |  | BU-06  |                                      |
| CONSUMABLES                                  |  |  |                                      |
| Ink Bottle                                   |  | PFI-050 (70 ml)  |                                      |
| Print Head                                   |  | PF-08  |                                      |
| Maintenance Cartridge                        |  | MC-32  |                                      |

<sup>7</sup> Includes roll holder set.  
<sup>8</sup> Auto Sheet Feeder  
<sup>9</sup> Operation Panel  
<sup>10</sup> Weight includes print head, excluding ink.  
<sup>11</sup> Height above which desktop basket's cloth does not touch the floor when opening the desktop basket.  
<sup>12</sup> Acoustic power and pressure are measured using ISO 7779 standard.