

imagePROGRAF  
PRO-526 | PRO-546 | PRO-566

Canon  
Delighting You Always

# Timeless Quality

— for Every Print



## Quality That Stays

**NEW**

PRO-526  
Max. Print Width

**NEW**

PRO-546  
Max. Print Width

**NEW**

PRO-566  
Max. Print Width

AUTO  
Media Detection

AUTO  
Media Estimation

**NEW**

Deep Black Density

**NEW**

LUCIA  
PRO II Ink

**12**  
COLOURS  
PIGMENT  
INK

**NEW**

Strong  
Light Resistance

**NEW**

Strong  
Scratch Resistance

Crystal-fidelity

500GB  
Encrypted HDD

Connectivity

Dual Roll System  
(OPTIONAL)

**NEW**

Interior  
LED Lights

Auto  
Media Loading

# Colours that Stand The Test of Time

With the new imagePROGRAF PRO Series printers that use **12-colour pigment inks** alongside having **improved black density**, experience greater expressions of colour for every print.

## FEATURES

### LUCIA PRO II ink

Bring your artworks to life with the LUCIA PRO II ink system, which offers **enhanced robustness** and **superior image quality** for all of your prints.



### PRINTS THAT ENDURE

Enjoy durable results that ensure the beauty of your artworks is maintained physically and visually.

#### LIGHT RESISTANCE

With improved light-resistant capability, colours on your creations will last much longer without fading even when placed in long term storage.

#### SCRATCH RESISTANCE\*

The printer's improved scratch-resistance helps to minimise potential scratches caused during printing or by mishandling on your printouts, especially for glossy or semi-glossy prints, ensuring they stay in pristine condition physically.

*\*Not applicable for non-glossy media.*

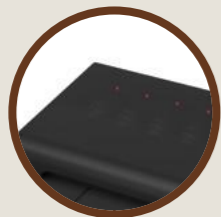
#### BEST PRINT QUALITY FOR PHOTOS & ART

Experience superior printing quality. The improved black density within the ink of printouts provides greater image accuracy alongside offering greater expressions in colour.

## PRINTER DESIGN

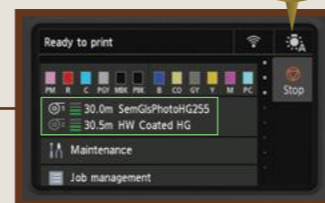
### MADE WITH CONVENIENCE IN MIND

Printing is effortless thanks to the enhanced user experience offered by the printer's design.



#### INTERIOR LED LIGHT

Ink and media wastage caused by misprints is reduced thanks to the new interior LED lights.

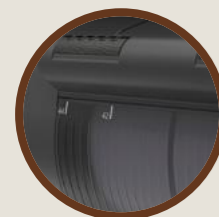


#### PANEL USABILITY

Easily check on how much roll media is left with the printer's improved user interface within its panel.

#### LED LIGHT VISIBILITY

Greater LED light visibility is made possible thanks to the translucent material used for the ink tank's cover.



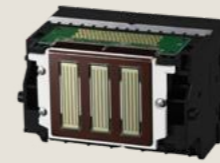
#### ADD ROLL MEDIA SIZE INDICATOR

The indicator allows you to check the size of your roll media effortlessly.



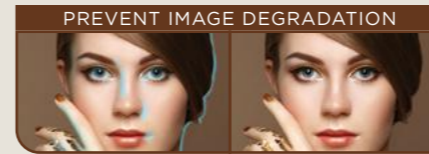
imagePROGRAF PRO-526

## ADDITIONAL FEATURES



#### FINE PRINT HEAD

Possessing 18,432 nozzles for 12 colours due to the Full photolithography Inkjet Nozzle Engineering (FINE) printhead, the printer effortlessly delivers quality results with finer detail while offering greater durability for every printout.



#### PREVENT IMAGE DEGRADATION

#### AUTOMATED PRINthead MONITORING & ALIGNMENT

Spend less time adjusting printheads manually with the printer's automated alignment, which minimises ink and paper wastage caused by failed test prints. The newly developed ink sensing system is able to prevent image degradation.



#### CRYSTAL-FIDELITY

Using an EOS camera and imagePROGRAF PRO Series together provides premium quality photo outputs through Canon's total technologies.



#### Finer Detail in Darker Areas

With improved black density thanks to the printer's new ink capabilities, darker areas in your images are more visible in printouts - allowing for greater expressions of your artwork or photos.

## SOFTWARE APPLICATIONS

### STREAMLINING YOUR PRINTING PROCESSES

Smoothen your workflows with free-of-charge software applications provided by Canon that are designed to streamline common printing operations.



#### PROFESSIONAL PRINT & LAYOUT

Experience ease with printing using the Professional Print & Layout feature, which provides useful functions that assist in creating the ideal outputs for your printouts.



#### ACCOUNTING MANAGER

Easily monitor while managing print usage for multiple large format Canon printers or individual ones using the Accounting Manager feature.



#### FREE LAYOUT PLUS

Drag & drop your files while resizing them to fit into paper layouts and lay them out freely in any size with the Free Layout Plus software. Images can also be nested alongside tiled effortlessly, and completed layouts can be previewed before being printed.



#### BORDERLESS PRINTS

Enjoy versatile printing thanks to borderless printing, which allows your artworks to be printed on any size of roll paper.



#### MEDIA CONFIGURATION TOOL

The Media Configuration Tool allows you to configure paper setups swiftly.



#### POSTERARTIST WEB

The PosterArtist Web feature offers a multitude of design templates suited for designing beautiful posters and other types of media.

# SPECIFICATIONS

TECHNOLOGY		PRO-526	PRO-546	PRO-566
Printer Type		12-Colour, 24", 610mm	12-Colour, 44", 1118mm	12-Colour, 60", 1524mm
Number of Nozzles		18,432 nozzles (1536 nozzles x 12 colours)		
Max. Print Resolution		2,400 x 1,200dpi		
Nozzle Pitch		600dpi x 2		
Line Accuracy <sup>1</sup>		± 0.1%		
Min. Ink Droplet Size		Minimum 4 Picoliter per colour		
Ink Capacity	Sales Ink	160ml, 330ml, 700ml		
	Bundle Starter Ink	160ml	330ml	
Ink Type		Pigment Inks - Photo Black, Matte Black, Cyan, Magenta, Yellow, Photo Cyan, Photo Magenta, Grey, Photo Grey, Red, Blue, Chroma Optimizer		
Printer Languages		SG Raster (Swift Graphic Raster), PDF (Ver. 1.7), JPEG (Ver. JFIF1.02)		
Print Solutions		Apple AirPrint, Direct Print Plus, Canon PRINT Inkjet/SELPHY, Free Layout plus, PosterArtist, Professional Print & Layout		
Management Solutions		Media Configuration Tool, Accounting Manager, Device Management Console, Quick Utility Toolbox		
Interface	USB A Port	USB Memory (Direct Print)		
	USB B Port	Built in Hi-Speed USB   Full Speed (12 Mbit/sec), Hi-Speed (480 Mbit/sec), Bulk Transfer   Series B (4 pins)		
	Gigabit Ethernet	Built in   IEEE802.3ab(1000 Base-T)   IEEE802.3u (100 Base-TX) / IEEE802.3 (10 Base-T) SNMP (Canon-MIB), HTTP, TCP/IP (IPv4/IPv6), FTP		
	Wireless LAN	IEEE802.11n/IEEE802.11g/IEEE802.11b   WPA-PSK (TKIP/AES)   WPA2-PSK (TKIP/AES)   WPA3-SAE (AES)   WPA-EAP (AES)   WPA2-EAP (AES)   WPA3-EAP (AES) <sup>2</sup>		
Standard Memory		3 GB		
Hard Disk		500GB (Encrypted HDD)		
<b>PRINT SPEED<sup>3</sup></b>				
Heavyweight Coated Paper HG (Posters/Photo) (Standard Mode)		1min 38sec	2min 49sec	
Glossy Photo Paper HG (Posters/Photo) (Standard Mode)		3min 11sec	5min 35sec	
<b>MEDIA HANDLING</b>				
Media Feed & Output Method	Roll Paper	One Roll, Upper-loading, Front Output		
	Added Roll Paper	One Roll, Front-loading, Front Output (44" and 24" models: Optional, 60" model: Default)		
	Cut Sheet	Upper-loading, Front Output <sup>4</sup>		
Media Width	Roll Paper/Cut Sheet	152.4 - 610mm	152.4 - 1118mm	152.4 - 1524mm
Media Thickness	Roll Paper/Cut Sheet	0.07 - 0.8mm		
Min. Printable Length	Roll Paper	101.6mm <sup>5</sup>		
	Cut Sheet	203.2mm		
Max. Printable Length	Roll Paper	18m <sup>6</sup>		
	Cut Sheet	1.6m		
Max. Roll Outer Diameter		170mm or less		
Media Core Size		Internal diameter of roll core: 2/3"		
Margins (Top, Bottom, Side)	Rec. Area (Roll Paper)	20mm, 3mm, 3mm		
	Rec. Area (Cut Sheet)	20mm, 20mm, 3mm		
	Printable Area (Roll Paper)	3mm, 3mm, 3mm		
	Printable Area (Roll Paper Borderless)	0mm, 0mm, 0mm		
	Printable Area (Cut Sheet)	3mm, 12.7mm, 3mm		
Media Take-up Roll Unit		Dual directions rolling take-up		
Delivery Directions		Face-up, Front Side		

DIMENSIONS & WEIGHT <sup>7</sup>		PRO-526	PRO-546	PRO-566
Packaged Dimensions (W x D x H) Weight	Main Unit + Pallet	1324 x 912 x 1139mm 138kg	1820 x 915 x 1042mm   185kg	2227 x 915 x 1025mm   222kg
	Stand + Basket	1174 x 827 x 223mm 27kg	-	-
	Main Unit + Stand + Basket + Pallet	1324 x 912 x 1139mm 157kg	-	-
	Roll Unit	1244 x 562 x 461mm 26kg	1727 x 562 x 461mm 33kg	2133 x 562 x 461mm 42kg
Dimensions (W x D x H) Weight	Main Unit	1110 x 734 x 628mm Approx. 85kg	1593 x 734 x 628mm Approx. 106kg	1999 x 734 x 628mm Approx. 124kg
	Main Unit + Stand + Basket	1110 x 984 x 1168mm (Basket Opened) 1110 x 766 x 1168mm (Basket Closed) Approx. 102kg	1593 x 984 x 1168mm (Basket Opened) 1593 x 766 x 1168mm (Basket Closed) Approx. 124kg	1999 x 984 x 1168mm (Basket Opened) 1999 x 766 x 1168mm (Basket Closed) Approx. 171kg
<b>POWER &amp; OPERATING REQUIREMENTS</b>				
Power Supply		AC 100-240V, 50-60Hz		
Power Consumption	Operation <sup>8</sup>	Approx. 85W		
	Sleep Mode <sup>8</sup>	Approx. 1.7W		
	Power OFF	Approx. 0.1W		
Rec. Environment	Temperature	Temperature: 15-30°C		
	Humidity	Humidity: 10-80% RH (no dew condensation)		
Acoustic Sound	Acoustic Power <sup>9</sup>	Operation: Approx. 6.4 Bels	Operation: Approx. 6.5 Bels	Operation: Approx. 6.6 Bels
	Acoustic Pressure <sup>9</sup>	Operation: Approx. 46dB(A) Standby: 35dB(A) or less	Operation: Approx. 48dB(A) Standby: 35dB(A) or less	
<b>ACCESSORIES</b>				
Printer Stand + Basket	SD-21 (Optional)	Included		
Roll Unit (Optional)	RU-23	RU-43	RU-63 (Mandatory)	
2/3" Roll Holder	RH2-29	RH2-46	RH2-66	
<b>CONSUMABLES</b>				
Ink Tank	PFI-3810 (160ml) / PFI-3830 (330ml) / PFI-3870 (700ml)   For Matte Black (MBK): PFI-810 (160ml) / PFI-830 (330ml) / PFI-870 (700ml)			
Print Head	PF-10			
Cutter	CT-07			
Maintenance Cartridge	MC-30			

Design and specifications are subject to change without notice.

<sup>1</sup> User adjustments necessary. Printing environment and media must match those used for the adjustments. CAD paper required: Plain paper, CAD tracing paper, coated paper, CAD translucent matte film only.

<sup>2</sup> Support IEEE802.1X (EAP-TLS/EAP-TTLS/PEAP).

<sup>3</sup> Time taken to print one page does not include time required for data processing, data transfer and pre-printing operations.

<sup>4</sup> For cut sheet, manual feed using media locking lever.

<sup>5</sup> Minimum printable length for Cloth and Canvas media is 200mm.

<sup>6</sup> Varies according to the operating system and application.

<sup>7</sup> Include roll holder set, exclude ink and print head.

<sup>8</sup> Using wired LAN.

<sup>9</sup> Measured using ISO 7779 standard by using 24"/42"/60" Standard Photo Glossy Paper HG, standard mode.



## SOUTH & SOUTHEAST ASIA REGIONAL HEADQUARTERS

CANON SINGAPORE PTE. LTD.  
1 Fusionopolis Place, #14-10, Galaxis, Singapore 138522  
Tel: 65-6799 8888 | Fax: 65-6799 8882 | <https://asia.canon>

DEALER'S STAMP

This document is for general information only and contents are subject to change without notice. Errors and omissions excepted. Weights and dimensions are approximate. Options, name and availability may vary by regions. Nothing in this document should be construed as a warranty. We expressly disclaim any liability or contractual obligations in connection with this document. Trademarks belong to their respective owners.