
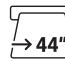






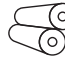
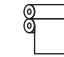






imagePROGRAF
GP-526S | GP-546S | GP-566S

Canon
Delighting You Always

Elevate Your Prints



- | | | | | | | |
|---|--|---|---|---|--|---|
|  <p>GP-526S
Max. Print Width</p> |  <p>GP-546S
Max. Print Width</p> |  <p>GP-566S
Max. Print Width</p> |  <p>AUTO
Media Detection</p> |  <p>AUTO
Estimation of
Remaining Media</p> |  <p>LUCIA
PRO II ink</p> |  <p>500
GB
Encrypted HDD</p> |
|  <p>Connectivity</p> |  <p>Dual Roll System
(Optional)</p> |  <p>Auto Media
Loading</p> |  <p>Vivid Colour</p> |  <p>Strong Light
Resistance</p> |  <p>Strong Scratch
Resistance</p> |  <p>Interior
LED Lights</p> |

Take Your Prints to New Heights

Elevate every printout by using Canon's latest GP series printers. Equipped with impressive new technology and ink capabilities, discover reliable, vibrant results with superior image quality for photos, posters and other types of media.

Stunning Colours & Results

With the new LUCIA PRO II pigment ink system, prints are more vibrant than ever - providing enhanced image quality for both photo and poster printing.



Vibrant Quality That Shines

Enjoy stunning colour expressions for photo and poster printing thanks to the printer's orange ink and grey ink output capabilities.

VIVID PRINTS WITH ORANGE INK

Draw attention to key details in your posters or photos with the printer's orange ink capabilities, which help printouts look visually appealing while offering greater colour accuracy as well.



SMOOTHER GRADIENTS WITH GREY INK

The printer's grey ink capabilities help your posters and photos achieve greater depth and nuance by offering enhanced colour accuracy alongside smoother transitions between the dark and light areas within your printout.



Enhanced Durability for Prints

Enjoy easier handling and longer-lasting vibrant results for printed photos, posters and other images.

LIGHT RESISTANCE

The improved light-resistance found within prints allows you to store them for an extended period of time without their vivid colours fading.

SCRATCH RESISTANCE

Worry less about your photos and posters as well as glossy or semi-glossy media being damaged physically with the printer's scratch-resistant capability, which keeps them safe from potential mishandling and scratches that might be caused during printing.

Borderless Prints

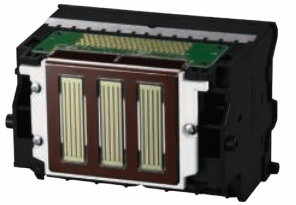
Photos & posters can be printed without any borders on multiple sizes of roll paper, ideal for meeting any form of printing need.

Aligned With Convenience

Printhead alignment is automated with the printer, saving you time from having to adjust it manually as well as reducing ink and paper wastage from potential failed test prints.

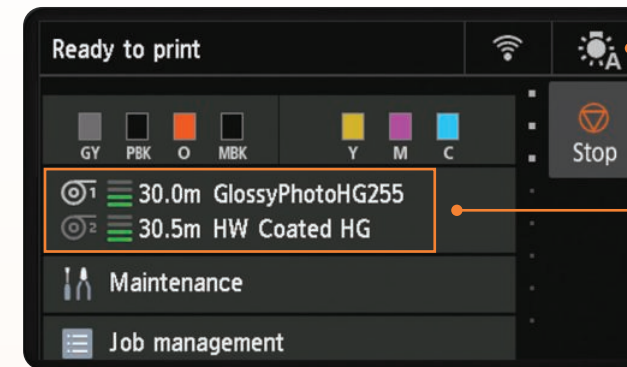
FINE Print Head

With FINE (Full photolithography Inkjet Nozzle Engineering), finer details & good print quality can be achieved for photos and posters with a high resolution reproduction of up to 2400 x 1200 DPI.



Designed for Maximum Efficiency

The printer is designed to offer an easier user experience while seamlessly fitting into environments visually.



INTERIOR LED LIGHT

The new interior LED lights can be turned on during the printing process.

PANEL USABILITY

The printer's panel comes with a user interface that allows you to easily tell the amount of roll media remaining.

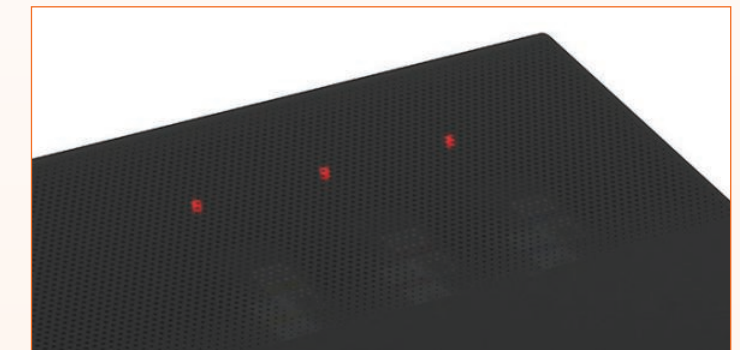
ADD ROLL MEDIA SIZE INDICATOR

Easily check the size of roll media with the indicator.



LED LIGHT VISIBILITY

A transparent material is used for the ink tank's cover, providing for greater LED light visibility.



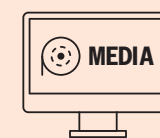
Optimising Every Workflow

The printer comes with a wide variety of versatile software designed to streamline your workflows.



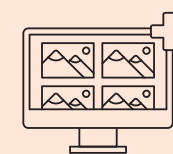
PROFESSIONAL PRINT & LAYOUT

The Professional Print & Layout software allows for easier professional photo printing by providing functions such as a preview of your prints before printing, black and white colour adjustment alongside setting out layouts.



MEDIA CONFIGURATION TOOL

Spend less time configuring custom paper setups with the Media Configuration Tool.



FREE LAYOUT PLUS

The Free Layout Plus feature allows you to resize files to fit paper layouts while providing a preview before printing simply by dragging and dropping them.



POSTERARTIST WEB

Design visually appealing posters effortlessly with creative templates offered by PosterArtist Web.



ACCOUNTING MANAGER

Manage and stay up to date on print usage for either individual or multiple large format Canon printers with the Accounting Manager software.

SPECIFICATIONS

PRINTER		GP-526S	GP-546S	GP-566S
Printer Type		7-Colour, 24", 610 mm	7-Colour, 44", 1118 mm	7-Colour, 60", 1524 mm
Number of Nozzles	18,432 nozzles (MBK/C/M/Y/O: 1536 nozzles x 2, PBK/GY: 1536 nozzles x 1)			
Max. Print Resolution	2,400 x 1,200 dpi			
Nozzle Pitch	600 dpi x 2			
Line Accuracy ¹	± 0.1% or less			
Min. Ink Droplet Size	Min. 4 Picolitres per colour			
Ink Capacity	Sales Ink	160 ml, 330 ml, 700 ml		
	Bundle Starter Ink	330 ml (Matte Black, Cyan, Magenta, Yellow, Orange) 160ml (Photo Black, Grey)	330 ml (Matte Black, Cyan Magenta, Yellow, Orange, Photo Black, Grey)	
Ink Type	Pigment Ink - Matte Black, Photo Black, Cyan, Magenta, Yellow, Grey, Orange			
Printer Languages	SG Raster (Swift Graphic Raster), PDF (Ver. 1.7), JPEG (Ver. JFIF1.02)			
Print Solutions	Apple AirPrint, Direct Print Plus, Canon PRINT Inkjet/SELPHY, Free Layout Plus, PosterArtist, Professional Print & Layout			
Management Solutions	Media Configuration Tool, Accounting Manager, Device Management Console, Quick Utility Toolbox			
Interface	USB B Port	USB Memory (Direct Print)		
	USB A Port	Built in Hi-Speed USB Full Speed (12 Mbit/sec), Hi-Speed (480 Mbit/sec), Bulk Transfer Series B (4 pins)		
	Network	Built in IEEE802.3ab (1000 Base-T), IEEE802.3u (100 Base-TX)/ IEEE802.3 (10 Base-T) SNMP (Canon-MIB), HTTP, TCP/IP (IPv4/IPv6), FTP		
	Wireless LAN	IEEE802.11n/IEEE802.11g/IEEE802.11b WPA-PSK (TKIP/AES) WPA2-PSK (TKIP/AES) WPA3-SAE (AES) WPA-EAP (AES) WPA2-EAP (AES) WPA3-EAP (AES) ²		
Standard Memory	3 GB			
Hard Disk	500 GB (Encrypted)			
PRINT SPEED³				
Heavyweight Coated Paper HG (Posters/Photo) (Standard Mode)		1 min 23 sec	2 min 24 sec	2 min 24 sec
Glossy Photo Paper HG (Posters/Photo) (Standard Mode)		2 min 43 sec	4 min 44 sec	4 min 44 sec
MEDIA HANDLING				
Media Width	Roll Paper/ Cut Sheet	152.4 ~ 610 mm	152.4 ~ 1118 mm	152.4 ~ 1524 mm
Media Thickness	Roll Paper/ Cut Sheet	0.07 ~ 0.8 mm		
Min. Printable Length	Roll Paper	101.6 mm ⁴		
	Cut Sheet	203.2 mm		
Max. Printable Length	Roll Paper	18 m ⁵		
	Cut Sheet	1.6 m ⁶		
Max. Roll Outer Diameter		170 mm or less		
Media Feed & Output Method	Roll Paper	One Roll, Upper-loading, Front Output		
	Added Roll Paper	One Roll, Front-loading, Front Output (44" and 24" models: Optional, 60" model: Default)		
	Cut Sheet	Upper-loading, Front Output ⁷		
Borderless Printing	Printable Media Width	152.4 ~ 610 mm	152.4 ~ 1118 mm	152.4 ~ 1524 mm
Margins (Top, Bottom, Side)	Recommended Area (Roll Paper)	Top: 20 mm, Bottom: 3 mm, Side: 3 mm		
	Recommended Area (Cut Sheet)	Top: 20 mm, Bottom: 20 mm, Side: 3 mm		
	Printable Area (Roll Paper)	Top: 3 mm, Bottom: 3 mm, Side: 3 mm		
	Printable Area (Roll Paper Borderless)	Top: 0 mm, Bottom: 0 mm, Side: 0 mm		
	Printable Area (Cut Sheet)	Top: 3 mm, Bottom: 12.7 mm, Side: 3 mm		

Specifications are subject to change without notice.

¹ User adjustments required. Printing environment and media must match those used for the adjustments. CAD paper required: Plain paper, CAD tracing paper, coated paper, CAD translucent matte film only.

² Supports IEEE802.1X (EAP-TLS/EAP-TTLS/PEAP)

³ Time taken to print one page does not include time required for data processing, data transfer and pre-printing operations.

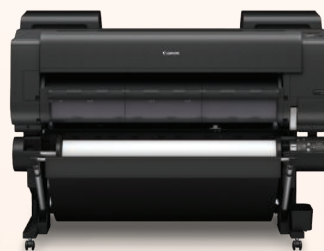
⁴ Minimum printable length for Cloth and Canvas media is 200 mm.

⁵ Varies according to the operating system and application.

DIMENSIONS & WEIGHT ⁸		GP-526S	GP-546S	GP-566S
Packaged Dimensions (W x D x H) Weight	Main Unit + Pallet	1338 x 912 x 1042 mm 125 kg	1820 x 915 x 1042 mm 181 kg	2227 x 915 x 1025 mm 218 kg
	Stand + Basket	1174 x 827 x 223 mm 27 kg	-	-
	Main Unit + Stand + Basket + Pallet	1338 x 912 x 1139 mm 153 kg	-	-
	Roll Unit	1244 x 562 x 461 mm 26 kg	1727 x 562 x 461 mm 33 kg	2133 x 562 x 461 mm 42 kg
Dimensions (W x D x H) Weight	Main Unit	1110 x 734 x 628 mm Approx. 83 kg	1593 x 734 x 628 mm Approx. 104 kg	1999 x 734 x 628 mm Approx. 122 kg
	Main Unit + Stand + Basket	1110 x 984 x 1168 mm (Basket Opened) 1110 x 766 x 1168 mm (Basket Closed) Approx. 100 kg	1593 x 984 x 1168 mm (Basket Opened) 1593 x 766 x 1168 mm (Basket Closed) Approx. 122 kg	1999 x 984 x 1168 mm (Basket Opened) 1999 x 766 x 1168 mm (Basket Closed) Approx. 169 kg
POWER & OPERATING REQUIREMENTS				
Power Supply		AC 100 - 240 V, 50 - 60 Hz		
Power Consumption	Operation ⁹	Approx. 91 W	Approx. 94 W	
	Sleep Mode ⁹	Approx. 1.7 W		
	Power OFF	Approx. 0.1 W		
Recommended Environment	Temperature	15 - 30 °C		
	Humidity	10 - 80% RH (no dew condensation)		
Acoustic Sound	Acoustic Power ¹⁰	Operation: Approx. 6.5 Bels	Operation: Approx. 6.6 Bels	
	Acoustic Pressure ¹⁰	Operation: Approx. 48 dB(A) Standby: 35 dB(A) or less	Operation: Approx. 49 dB(A) Standby: 35 dB(A) or less	
ACCESSORIES				
Printer Stand + Basket		SD-21 (Optional)	Included	
Roll Unit (Optional)		RU-23	RU-43	RU-63 (Mandatory)
2/3" Roll Holder		RH2-29	RH2-46	RH2-66
CONSUMABLES				
Ink Tank		PFI-3810 (160 ml) / PFI-3830 (330 ml) / PFI-3870 (700 ml) For Matte Black (MBK) & Orange (OR): PFI-810 (160 ml) / PFI-830 (330 ml) / PFI-870 (700 ml)		
Print Head		PF-10		
Cutter		CT-07		
Maintenance Cartridge		MC-30		



GP-566S



GP-546S



GP-526S

⁸ For cut sheet, maximum printable length is when printer stand is installed.

⁷ For cut sheet, manual feed using media locking lever.

⁹ Includes roll holder set, excludes ink and print head.

¹⁰ Using wired LAN.

¹⁰ Measured using ISO 7779 standard by using 24"/42"/60" Standard Photo Glossy Paper HG, standard mode.



**SOUTH AND SOUTHEAST ASIA REGIONAL HEADQUARTERS
CANON SINGAPORE PTE. LTD.**

1 Fusionopolis Place, #14-10 Galaxis, Singapore 138522

Tel : 65-6799-8888 | Fax : 65-6799-8882 | <https://asia.canon>

Delighting You Always

DEALER'S STAMP

This document is for information purposes only. The contents are subject to change without notice. Product options, name and availability may vary by regions. We expressly disclaim any liability or contractual obligations with respect to this document. Brands and product names are trademarks and/or registered trademarks of their respective owners.